

136Ps Audi Q2L-Etron Long Range SUV Electric Left Steering 5-Seater SUV Made In China Ship To Worldwide

Our Product Introduction

Basic Information

- Place of Origin: China
- Brand Name: Audi
- Certification: VDA, TUV, ISO
- Model Number: Q2L-ETRON
- Minimum Order Quantity: 1
- Price: \$16000-19000/units
- Packaging Details: by sea, by trailer, rail via containers, LCL and RO-RO vessel
- Delivery Time: 7 working days
- Payment Terms: L/C, D/A, D/P, T/T, Western Union, Money Gram
- Supply Ability: 1-10 units 15 - 20 working days, 10-30 units 20-30 working days, 30-50 units ≥30 working days

R·CHENG

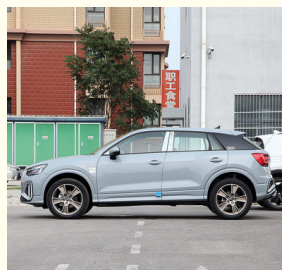


Product Specification

- Product Name: Audi Q2L-etron
- Body Structure: 5-seater SUV
- Length * Width * Height: 4268x1785x1545 Mm
- MAX. Speed: 160 Km/h
- Steering: Left
- Fuel: 100% Electric
- Highlight: Audi Q2L-Etron long range suv electric, 136Ps long range suv electric, 136Ps Audi Q2L-Etron



More Images



Product Description

Audi Q2L-Etron EV

Audi Q2L-Etron Hot Sell Popular Design Electric Car Long Range Electric Vehicle Small Ev Cars

Product Configurations

| | |
|---------------------------|-----------------------------------|
| Battery Capacity | 44.1 KWH |
| Charging Time | Fast 0.62 Hours, Slow 17 Hours |
| Motor Power | 136Ps |
| MAX. Range | 325 km |
| MAX. Speed | 150km/h |
| Vehicle Weight | 1610 kg |
| Tyre Specifications | 215/55 R17 |
| Length*Width*Height | 4268*1785*1545 mm |
| Driving Direction | Left-hand Drive |
| Body Structure | 5-door, 5-seat |
| Battery Type | Ternary Lithium Battery |
| Steering Wheel Assistance | Electric Steering Wheel Assist |
| Light Type | LED |
| Battery Warranty | 120,000 km In 8 Years |
| Motor Torque | 290 N.m |
| Wheelbase | 2628 mm |
| Seat | 5 |
| Front Suspension | McPherson Independent Suspension |
| Rear Suspension | Multi-link Independent Suspension |
| Steering System | Electric |
| Parking Brake | Electric |
| Braking System | Front Disc +Rear Dsic |
| ABS | Yes |
| ESC | Yes |
| Radar | Rear 8 |
| After The Camera | 360° |
| Skylight | Sunroof |
| Steering Wheel | Multi-function |
| Seat Material | Leather |
| Driver Seat Adjustment | Electric |
| Passenger Seat Adjustment | Electric |

Touch Screen

Yes

Product Description

AUDI Q2L E-TRON

For every boundless heart

Elegant interior
+Alcantara mixed leather

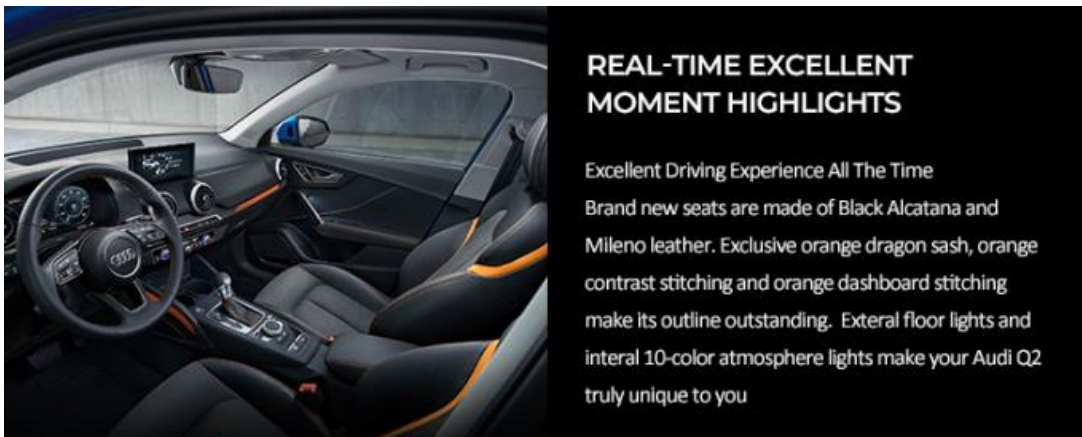
Heating anti-glare
Electric smart rear view mirror

Rain-sensing
wipers



For every boundless heart

Elegant interior+Alcantara mixed leather
Heating anti-glare Electric smart rear view mirror
Rain-sensing wipers



REAL-TIME EXCELLENT MOMENT HIGHLIGHTS

Excellent Driving Experience All The Time
Brand new seats are made of Black Alcatana and Mileno leather. Exclusive orange dragon sash, orange contrast stitching and orange dashboard stitching make its outline outstanding. Exteral floor lights and interal 10-color atmosphere lights make your Audi Q2 truly unique to you

Real-time excellent moment highlights

Excellent Driving Experience All The Time Brand new seats are made of Black Alcatana and Mileno leather. Exclusive orange dragon sash, orange contrast stitching and orange dashboard stitching make its outline outstanding. Exteral floor lights and interal 10-color atmosphere lights make your Audi Q2 truly unique to you.



Easy To Charge

Charging at home: we offer an Audi exclusive charging wallbox for free and one-time basic installation service.

Charging outside: Audi Q2 are compatible with mutil-brand charing piles in hundreds of cities.



Audi E Service Strategy

Based on the needs of electric vehicle drivers, "Audi E service strategy" provides a complete integrate electrification solution, which effectively releases Audi drivers' concerns and worries at every scenario.



QUALITY OF SAFETY

High - severity vehicle durability verification

Product Color Show

HOT SELLING COLORS SHOW



● DARK GRAY



● RED



● LIGHT GRAY



● BLACK



○ WHITE

RUICHENG Chengdu Ruicheng Automobile Service Co., Ltd.

☎ 19158810053

✉ mango@ruichengauto.com

🌐 electriccars-ev.com

Hall 5, No. 1, Yinhe Road, Damian Street Chengdu City, Sichuan Province, China