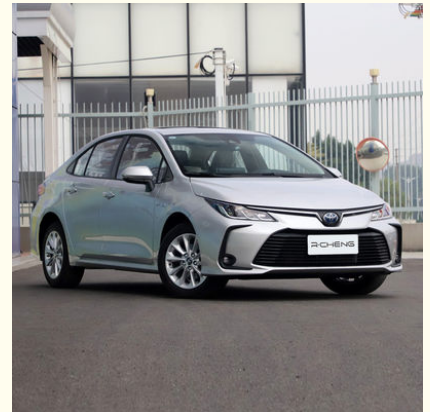


## TOYOTA Corolla Sedan Japanese Manufactured Cars 1.5L Naturally Aspirated CVT Transmission

Our Product Introduction

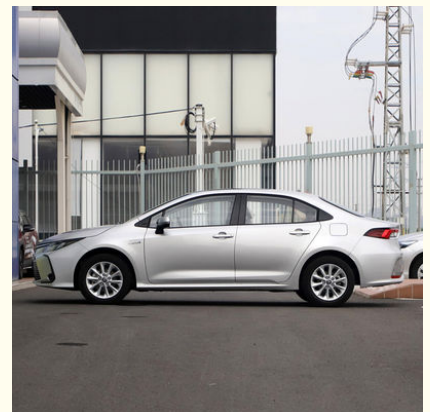
### Basic Information

- Place of Origin: China
- Brand Name: Toyota
- Certification: VDA, TUV ,ISO
- Model Number: Corolla
- Minimum Order Quantity: 1
- Price: \$15000-17000/units
- Packaging Details: by sea, by trailer, rail via containers, LCL and RO-RO vessel
- Delivery Time: 7 working days
- Payment Terms: L/C, D/A, D/P, T/T, Western Union, MoneyGram
- Supply Ability: 1-10 units 15 - 20 working days, 10-30 units 20-30 working days, 30-50 units ≥30 working days



### Product Specification

- Color: Blue / White / Black / Red / Sliver
- Screen Size: 12.3"
- Screen: 12.3" Touch Screen
- Length\*Width\*Height (mm): 4635\*1780\*1435
- Max. Speed (KM/H): 205
- Vehicle Weight (kg): 1695
- Fuel Type: Gasoline
- Displacement (L): 1.5 L
- Driving Assistance Video: 360° & Reverting Image
- General Oil Consumption (NEDC): 4.07
- Wheelbase: 2700
- Drive Mode: Front Drive And Front Engine
- Number Of Cylinders: 3
- Maximum Torque(N·m): 185N·m



### More Images



for more products please visit us on [electriccars-ev.com](http://electriccars-ev.com)

Product Description

# Toyota Corolla

Hot Sale Auto TOYOTA Corolla Sedan Car Japanese Famous Brand 1.5L Naturally Aspirated CVT Transmission

Products Description

TOYOTA

# COROLLA

Meet a new landscape with a new attitude

OTA Wireless upgrade	8 SRS airbags	2700mm wheelbase
-------------------------	------------------	---------------------

Our Product Introduction

for more products please visit us on [electriccars-ev.com](http://electriccars-ev.com)

- ▼ Lower weight center to create a ready posture  
Broader front face to set off a strong and deep aura



- ▶ Imperious front grille



- ▶ Rear bumper design



- ▶ Integrated LED taillights



- ▶ 16 inch aluminum alloy Wheel





Open center  
console

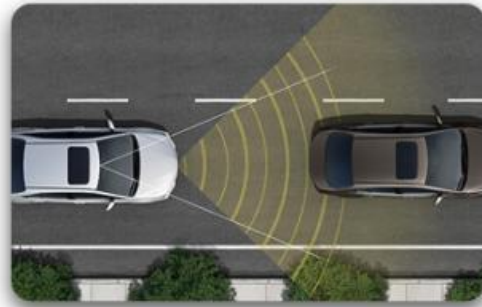
Intelligent fuel-  
saving start-stop  
system

Center console  
trim strip

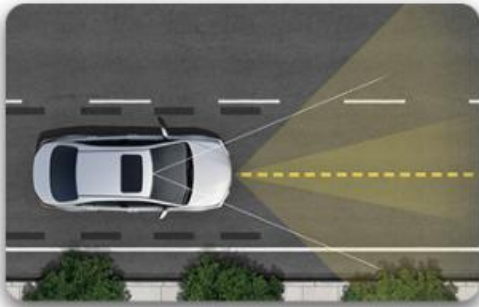
Intelligent  
air conditioning  
system



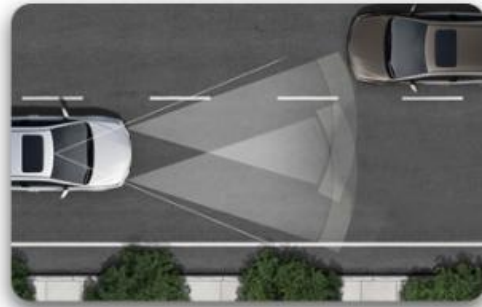
PCS pre-collision safety system



LTA lane tracking assistance system



DRCC dynamic radar cruise control system



AHB automatic adjustment high beam system



High rigidity body



Pretightening three-point seat belt

## Product Color Show

## HOT SELLING COLORS SHOW



### Product Configuration

Max. Speed (km)	180KM/H
Length*Width*Height (mm)	4900*1840*1455mm
Wheelbase (mm)	2825mm
Body Structure	5 seats, 5 doors
Tire Specification	225/45 R17
Driving Mode	Front-engine Front-wheel drive layout FF
Fuel Oil Type	92# Gasline
General Oil Consumption (NEDC)	4.28L
Tank Capacity (L)	50L
Displacement (L)	1.8L
Valve Mechanism	DOHC
Fuel	Gas/Petrol
Engine Type	Turbo
Cylinders	4
Air Intake Type	Turbocharger
Front Suspension	Macpherson type independent suspension
Rear Suspension	Double Wishbone Independence Suspension
Forward Shift Number	8
Maximum Torque(N·m)1	85N·m
Sunroof Type	Panoramic
Sensory Trunk	Yes

Number of Seats	5
Lane Dispatch Warning System	Yes
Cruise System	Yes
Drive	FWD
Steering System	Electric
Parking Brake	Electric
Brake System	Front disc+Rear dsic
Tire Size	R15 R16 R17
Airbags	6
TPMS(Tire Pressure Monitor System)	Yes
ABS(Antilock Braking System)	Yes
ESC(Electronic Stability Control System)	Yes
Radar	Front 4+Rear 2
Rear Camera	360°
Cruise Control	ACC
Sunroof	Panoramic sunroof
Roof rack	Aluminium alloy
Steering Wheel	Multi-function
Seats Material	Leather
Interior Color	Dark/Blue
Driver's Seat Adjustment	Electric
Copilot Seat Adjustment	Electric
Touch Screen	Yes
Car Entertainment System	Yes
Air Conditioner	Automatic
Headlight	LED
Daytime Light	LED
Front Window	Electric
Rear Window	Electric
Exterior Rearview Mirror	Electric adjustment
Max. Speed (km/h)	190KM/H
Vehicle Weight (kg)	1575kg
General Oil Consumption (NEDC)	6.4L
Vehicle Warranty	3 Years/ 100,000 KM

**RUICHENG Chengdu Ruicheng Automobile Service Co., Ltd.**



19158810053



mango@ruichengauto.com



electriccars-ev.com

Hall 5, No. 1, Yinhe Road, Damian Street Chengdu City, Sichuan Province, China